

Date and Venue

The meeting will be held in Mykonos on October 1-3, 2007
Venue: Saint. John Hotel

How to reach the Meeting Venue

By plane: Mykonos has an international airport located 10 minutes by taxi from the conference site

Official Language

English is the official language of the conference; no simultaneous translation will be provided

Registration Fee

(20% VAT included) € 350.00
Delegates' registration fee includes: access to scientific sessions, delegate's folder, a copy of Proceedings Volume published by the New York Academy of Sciences

Catering package

(10% VAT included) € 90.00
Catering package fee includes: 3 coffee breaks, 3 light lunches

Hotel accommodation

Those wishing to book hotel accommodation should fill in the Hotel Reservation Form and send it together with the payment requested plus € 15.00 as booking fee to the Organizing Secretariat OSC Healthcare. Deadline for hotel accommodation is September 1, 2007.

CANCELLATION POLICY

(for registration and hotel accommodation)

All cancellations must be notified in writing to the Organizing Secretariat. **Cancellations before September 1, 2007:** € 15.00 for registration fees and € 15.00 for hotel accommodation will be withheld as processing fee.

Cancellations after September 1, 2007: no refund

Organizing Secretariat

OSC Healthcare - Via S. Stefano 6 - 40125 Bologna
Ph. 0039-051-224232 - Fax 0039-051-226855
info@oscbologna.com - www.oscbologna.com

Learning Objectives

Participants who attend this conference will be able to:

- Identify problems in human reproduction
- Calculate the actual potential to solve human reproduction problems in vivo or in vitro, using the most updated techniques
- Appraise comprehensive updates of evidence-based approaches for the study of male infertility, assisted reproduction techniques, ovarian biology and cancer, trophoblast implantation and placentation, stem cell biology, and endometriosis

Accreditation

The Yale School of Medicine is accredited by the Accreditation Council for Continuing Medical Education to sponsor continuing medical education for physicians. The Yale School of Medicine designates this educational activity for a maximum of 16 AMA PRA Category 1 Credits™. Physicians should only claim credit commensurate with the extent of their participation in the activity. The American Medical Association has determined that physicians not licensed in the US who participate in the CME activity are eligible for AMA PRA Category 1 Credit™.

Financial Support

The Cervesi Hospital of Cattolica (Italy), Unit of Physiopathology of Reproduction, is grateful to its supporters. They are acknowledged in all conference materials.

Disclosure Policy

It is the policy of Yale School of Medicine, Continuing Medical Education, to ensure balance, independence, objectivity and scientific rigor in all its educational programs. All faculty participating as speakers in these programs are required to disclose any relevant financial relationship(s) they (or spouse or partner) have with a commercial interest that benefits the individual in any financial amount that has occurred within the past 12 months; and the opportunity to affect the content of CME about the products or services of the commercial interests. The Center for Continuing Medical Education will ensure that any conflicts of interest are resolved before the educational activity occurs.

Honorary President

Carlo Flamigni

Scientific Board

Carlo Bulletti
Seth Guller
Dominique De Ziegler
Charles Lockwood

Speakers and Affiliations

Yale University School of Medicine: A. Arici, C. Bulletti, S. Guller, G. Krikun, C. Lockwood, G. Mor, P. Patrizio, H. Taylor

**Unité de la Médecine de la Reproduction
CHUV-Lausanne:** D. De Ziegler

NHS Sheffield: M. Metwally

University of Athens: D. Loutradis

University of Bologna - Scientific Didactic Pole of Rimini:
C. Bulletti

University of Glasgow: D. H. Barlow

University of Manchester: J. D. Aplin

University of Milan: E. Ferrazzi

University of Texas Health Science Center: R.S. Schenken

**New York Downtown Hospital - Presbyterian Health Care
Weill Medical College of Cornell University:**
G. Del Priore

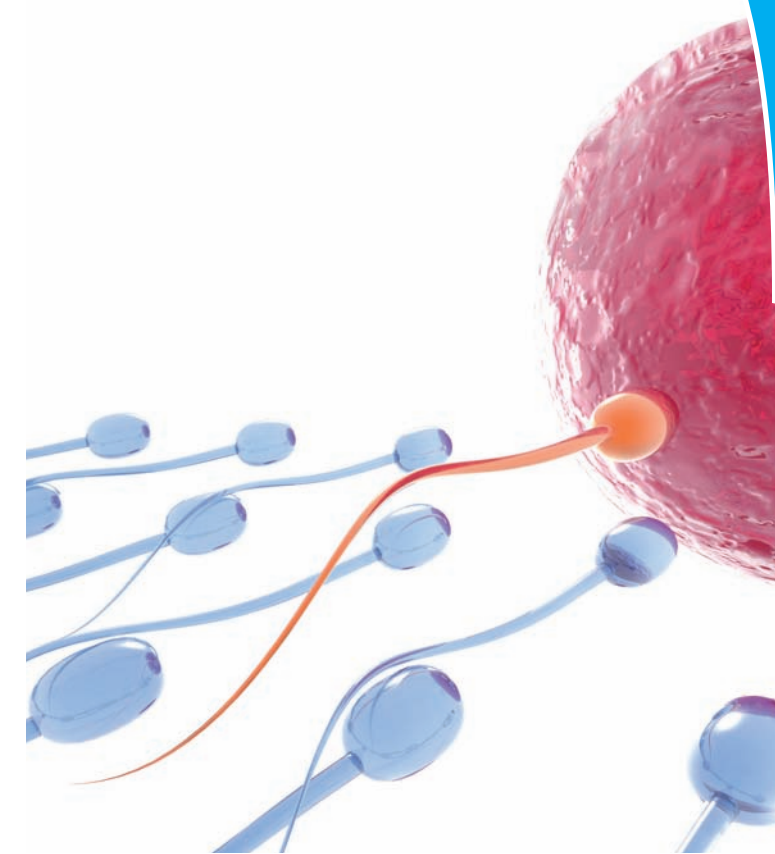
**Chelsea & Westminster Hospital, Assisted Conception Unit
(London) - Esman Medical Consulting srl (Milan):**
E. Semprini

Weill Medical College of Cornell University:
G. Palermo, K. Oktay, G. Del Priore

Hopitaux Universitaires de Strasbourg: A. Wattiez

Organized by:

The Unit of Physiopathology
of Reproduction
of the Cervesi Hospital of Cattolica (Italy)
in cooperation with Yale University School of Medicine



Human Reproduction in 2007
Mykonos 1-3 October, 2007

With the patronage of:

Health Care Unit of Rimini

Alma Mater Studiorum University of Bologna - Faculty of Medicine and Surgery
Scientific Didactic Pole of Rimini

SIFES - MR (Italian Society of Fertility and Sterility and Reproductive Medicine)

SEGI (Italian Society for Gynaecological Endoscopy)

October 1, 2007

- 9.00** The ovary: anatomy and function throughout human life
K. Oktay (Manhattan - NY - USA)
- 9.30** Pharmacogenetics in ovarian stimulation-current concepts
D. Loutradis (Athens - Greece)
- 10.00** Pre-treatments before the induction of ovulation in assisted reproduction technologies (ART). Evidence-based medicine in 2007
A. Arici (New Haven - CT - USA)
- 10.30** Updating ovarian controlled hyperstimulation in 2007: a review
D. De Ziegler (Geneve - Switzerland)
- 11.00** Coffee break
- 11.30** Tubal patency and pelvic factor of infertility: diagnosis, prognosis and treatments
C. Bulletti (Cattolica - Italy)
- 12.00** The effect of obesity on female reproductive function
M. Metwally (Sheffield - UK)
- 12.30** Role of Toll-like Receptors in implantation and placentation
G. Mor (New Haven - CT - USA)
- 13.00** Placentation and the pathogenesis of preeclampsia and intrauterine growth restriction
S. Guller (New Haven - CT - USA)
- 13.30** Surgical strategies to improve embryo implantation: a review
E. Ferrazzi (Milano - Italy)
- 14.00** Evidence-based medicine in the management of recurrent abortion
E. Semprini (Milano - Italy)
- 14.30** Lunch with the Professor

October 2, 2007

- 9.00** Mechanism of abnormal uterine bleeding with long term progestin only contraception
C. Lockwood (New Haven - CT - USA)
- 9.30** Paravaginal repair: evidence based surgery
A. Wattiez (Strasbourg - France)
- 10.00** Assisted reproductive technologies (ART): results in Europe
D. De Ziegler (Geneve - Switzerland)
- 10.30** An update of ART: results in the USA
G. Palermo (New York - NY - USA)
- 11.00** Modern andrology: genetic and post-genomic studies of the male gametes
P. Patrizio (New Haven - CT - USA)
- 11.30** Proteomics and bioinformatics of early implantation
J.D. Aplin (Manchester - UK)
- 12.00** Coffee break
- 12.30** The pathogenesis of endometriosis
H. Taylor (New Haven - CT - USA)
- 13.00** Angiogenesis and molecular interventions in endometriosis
G. Krikun (New Haven - CT - USA)
- 13.30** Endometriosis and Infertility: epidemiology and evidence-based treatments
A. Arici (New Haven - CT - USA)
- 14.00** Endometriosis: evidence-based surgery
R.S. Schenken (San Antonio - TX - USA)
- 14.30** Uterine transplantation: assessing its medical priority
G. Del Priore (New York - NY - USA)
- 15.00** Lunch with the Professor

**OCTOBER 2 - Focus on ART
Special Session SIFES (Italian Society of Fertility, Sterility and Reproductive Medicine).**

Chairmen: Pasquale Patrizio (Yale, NH)
and Gianpiero Palermo (Cornell, NY)

- 16.00-16.20** Male infertility: insight from basic research
R. Talevi, Naples
- 16.20-16.40** Mild stimulation
E. Barale, Pisa
- 16.40-17.00** Oocyte freezing and embryo freezing. Comparing the efficiencies
A. Borini, Bologna
- 17.00-17.20** Strategies to maximize ART results
P. Levi Setti, Milan
- 17.20-17.40** The use of heparin and aspirin in the ART
A. Palagiano, Naples
- 17.40-18.00** The fertilized oocyte: genetic diagnosis
A. Guglielmino, Catania
- 18.00-18.20** Endometrial preparation for embryo nidation
G. D'Amato, Bari
- 18.20-18.40** Ovarian reserve
M.E. Coccia, Firenze

October 3, 2007

- 9.00** Medical interventions in menopause (to treat or not to treat?): state of the art in 2007
D.H. Barlow (Glasgow - UK)
- 9.30** Markers of ovarian cancer: impact on clinical management
G. Mor (New Haven - CT - USA)
- 10.00** Hysterectomy: epidemiology and a comparison of results using different techniques
R.S. Schenken (San Antonio - TX - USA)
- 10.30** Oocyte freezing and ovarian transplantation: hormonal and reproductive supply
P. Patrizio (New Haven - CT - USA)
- 11.00** Coffee break
- 11.30** Stem Cells: a perspective on oocytes
K. Oktay (Manhattan - NY - USA)
- 12.00** Stem Cells: a perspective on spermatozoa
G. Palermo (New York - NY - USA)
- 12.30** Mesenchymal and uterine stem cells
H. Taylor (New Haven - CT - USA)
- 13.00** Lunch with the Professor